



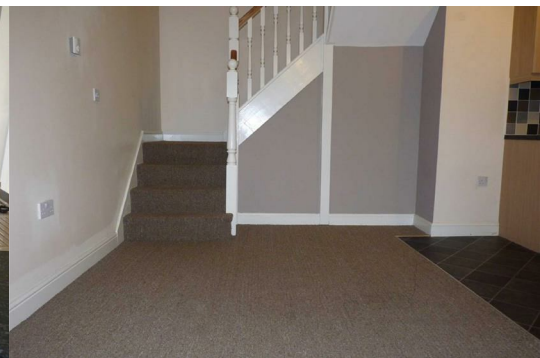
6 Queens Court, Wardley Street

Pemberton, Wigan, WN5 8BF

£725 PCM



It is with great pleasure that Sapphire Homes are in a position to offer TO LET this good sized 2 bedroom mews house in the heart of Pemberton which would be ideal for professional, couple or small family. The house is situated in a gated courtyard offering a secure home and has an allocated parking bay. The property comprises of entrance, downstairs W.C. open plan lounge/ dining room with modern fitted kitchen, 2 double bedrooms & bathroom with large luxury shower over bath in the bathroom which also serves as a jack and jill bathroom (accessible from hall & master bedroom). Gas Central Heating and Double Glazing throughout. Allocated parking bay. Close to local amenities and transport links. Would be ideal for those who require access to the M58 or M6 as the property is only half a mile away from junction 26. Internal viewing is highly recommended. No Smoking.



GROUND FLOOR

Entrance / Hallway

W.C.

Lounge

Kitchen

Dining Area

FIRST FLOOR

Landing

Master Bedroom

Bedroom 2

Bathroom

EXTERNAL

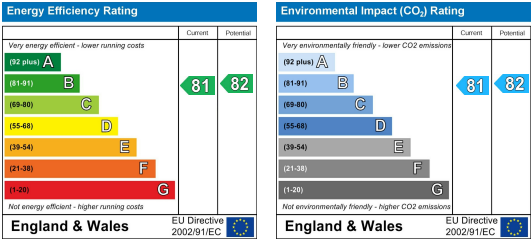
Area Map



Floor Plans



Energy Efficiency Graph



These particulars, whilst believed to be accurate are set out as a general outline only for guidance and do not constitute any part of an offer or contract. Intending purchasers should not rely on them as a representation of fact, but must satisfy themselves by inspection or otherwise as to their accuracy. No person in this firms employment has the authority to make or give any representation or warranty in relation to this property.

